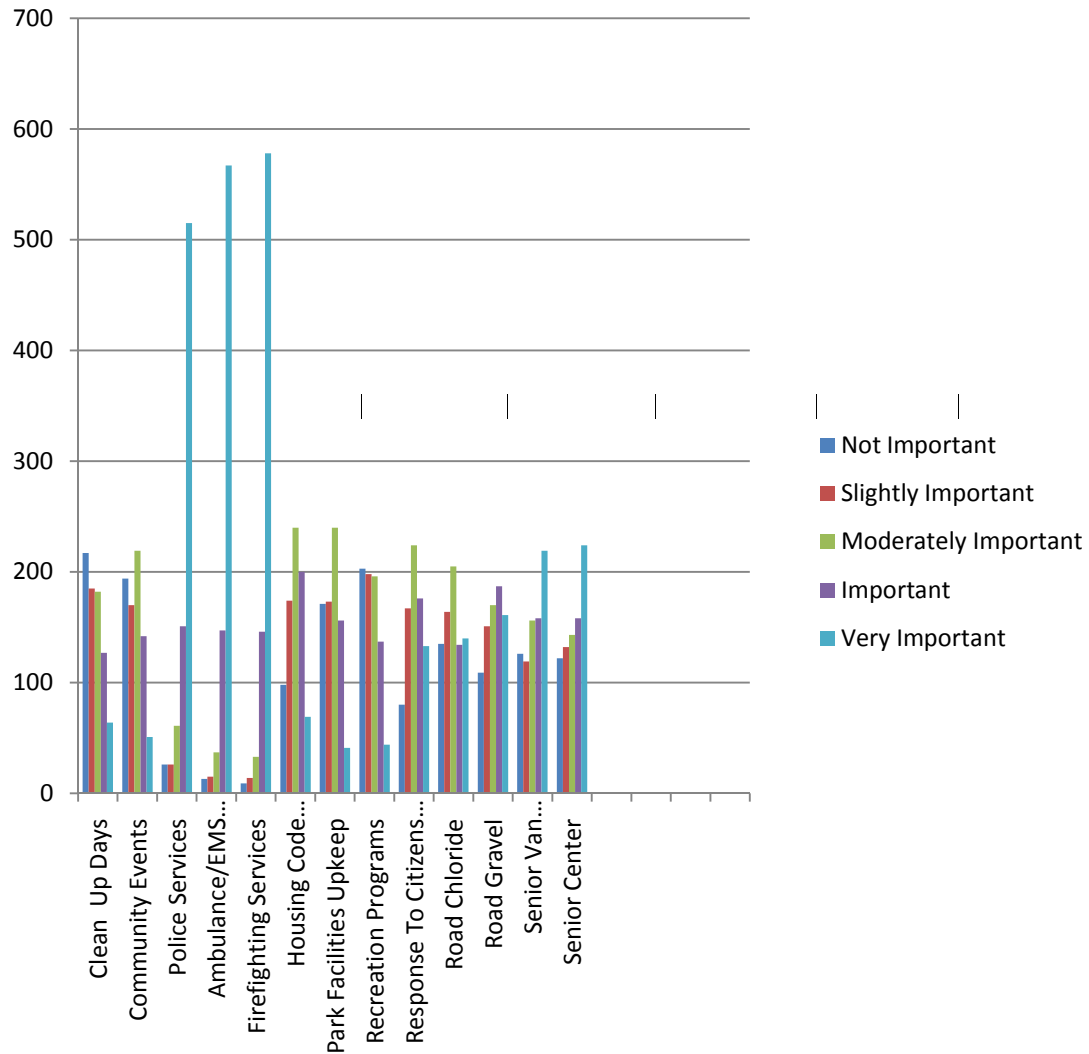
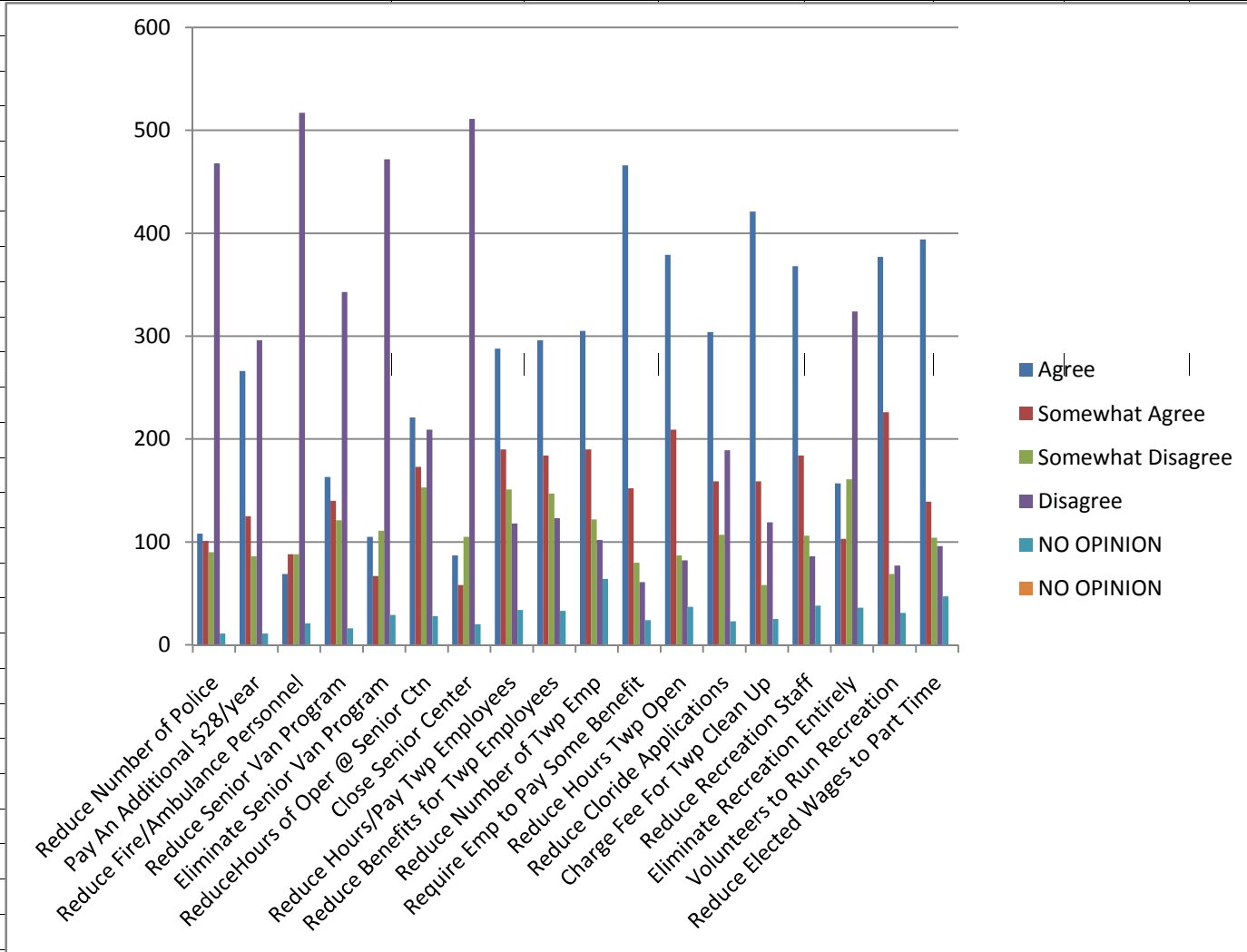


SECTION ONE: BASIC SERVICES

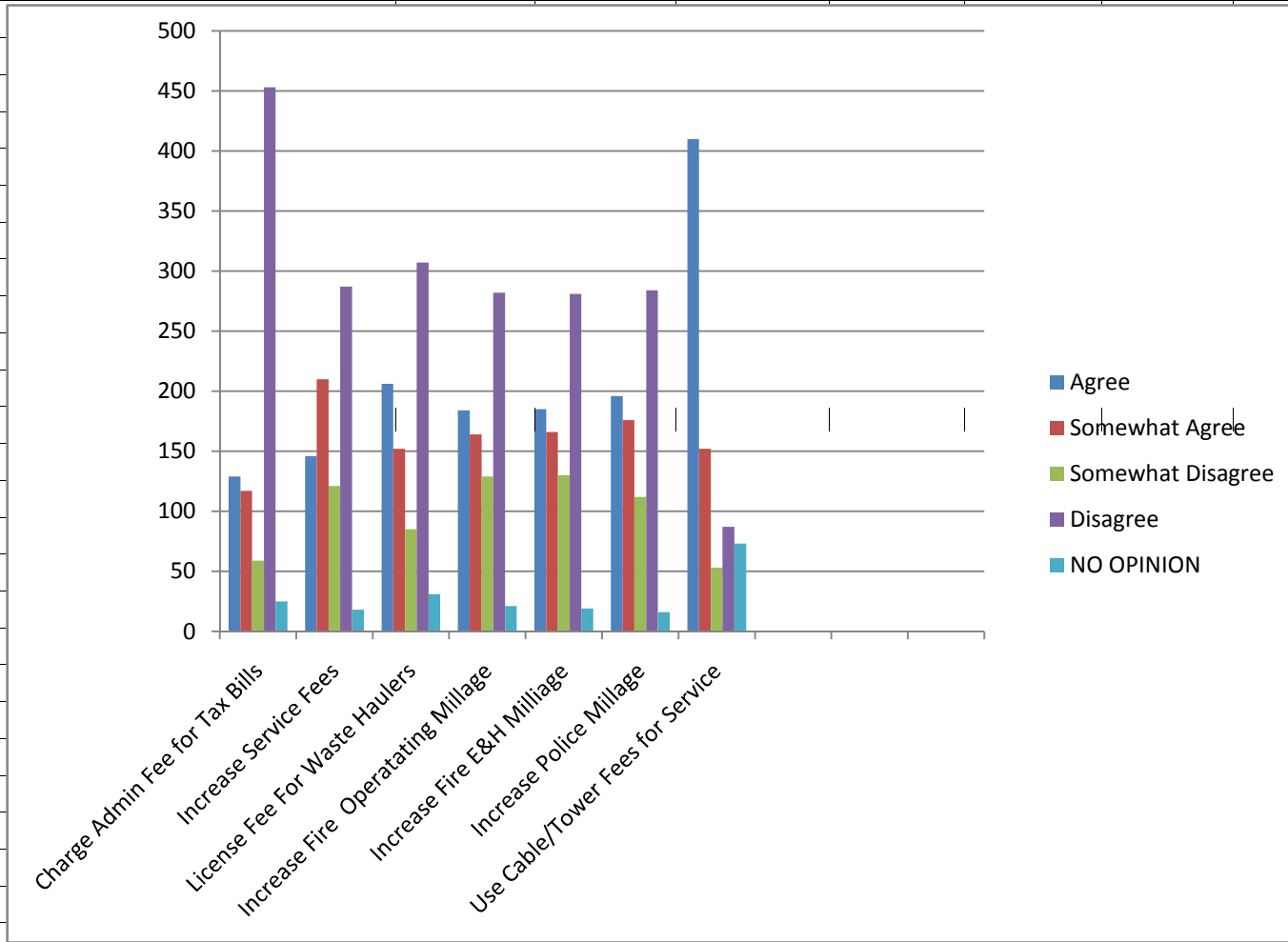


SECTION TWO: BUDGET PLANNING							
SECTION 2		Agree	Somewhat	Somewhat	Disagree	NO	
EXPEND			Agree	Disagree		OPINION	
1	Reduce Number of Police	108	101	90	468	11	778
2	Pay An Additional \$28/year	266	125	86	296	11	784
3	Reduce Fire/Ambulance Personnel	69	88	88	517	21	783
4	Reduce Senior Van Program	163	140	121	343	16	783
5	Eliminate Senior Van Program	105	67	111	472	29	784
6	ReduceHours of Oper @ Senior Ctn	221	173	153	209	28	784
7	Close Senior Center	87	58	105	511	20	781
8	Reduce Hours/Pay Twp Employees	288	190	151	118	34	781
9	Reduce Benefits for Twp Employees	296	184	147	123	33	783
10	Reduce Number of Twp Emp	305	190	122	102	64	783
11	Require Emp to Pay Some Benefit	466	152	80	61	24	783
12	Reduce Hours Twp Open	379	209	87	82	37	794
13	Reduce Chloride Applications	304	159	107	189	23	782
14	Charge Fee For Twp Clean Up	421	159	58	119	25	782
15	Reduce Recreation Staff	368	184	106	86	38	782
16	Eliminate Recreation Entirely	157	103	161	324	36	781
17	Volunteers to Run Recreation	377	226	69	77	31	780
18	Reduce Elected Wages to Part Time	394	139	104	96	47	780
RED INDICATES MORE ANSWERS THAN SURVEYS							

SECTION TWO: BUDGET PLANNING

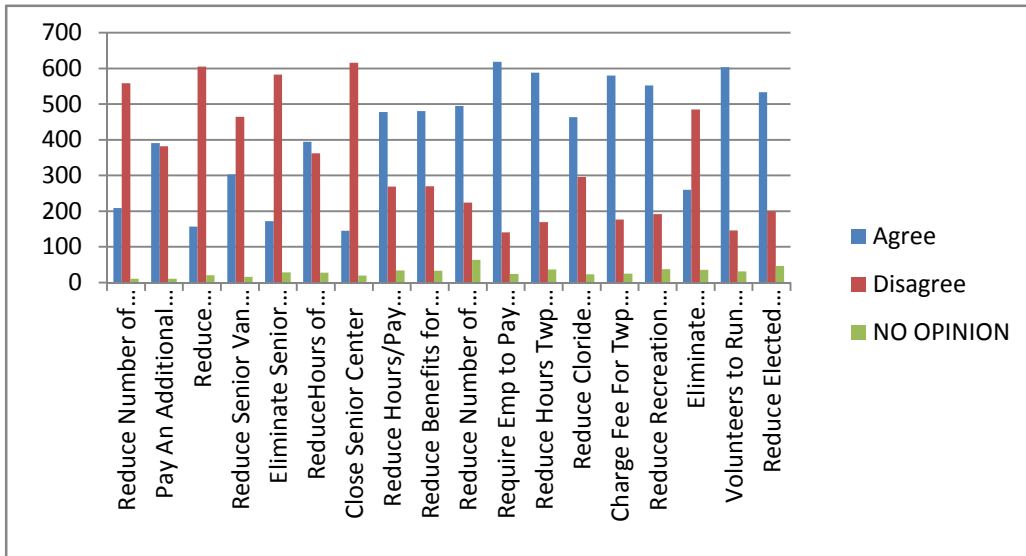


SECTION TWO: REVENUES



SECTION TWO: BUDGET PLANNING

SECTION 2 EXPEND	Agree	Disagree	NO OPINION	
1	Reduce Number of Police	209	558	11
2	Pay An Additional \$28/year	391	382	11
3	Reduce Fire/Ambulance Personnel	157	605	21
4	Reduce Senior Van Program	303	464	16
5	Eliminate Senior Van Program	172	583	29
6	ReduceHours of Oper @ Senior Ctn	394	362	28
7	Close Senior Center	145	616	20
8	Reduce Hours/Pay Twp Employees	478	269	34
9	Reduce Benefits for Twp Employees	480	270	33
10	Reduce Number of Twp Emp	495	224	64
11	Require Emp to Pay Some Benefit	618	141	24
12	Reduce Hours Twp Open	588	169	37
13	Reduce Cloride Applications	463	296	23
14	Charge Fee For Twp Clean Up	580	177	25
15	Reduce Recreation Staff	552	192	38
16	Eliminate Recreation Entirely	260	485	36
17	Volunteers to Run Recreation	603	146	31
18	Reduce Elected Wages to Part Time	533	200	47



SECTION TWO: REVENUES

SECTION 2 REVENUES	Agree	Disagree	NO OPINION
1 Charge Admin Fee for Tax Bills	246	612	25
2 Increase Service Fees	356	407	18
3 License Fee For Waste Haulers	358	392	31
4 Increase Fire Operatating Millage	348	411	21
5 Increase Fire E&H Milliage	351	411	19
6 Increase Police Millage	372	396	16
7 Use Cable/Tower Fees for Service	562	140	73

